



Meridian

LAPEX BCS PRO 2000 & LAPEX DAVAN



Non-invasive full body contouring system - a brilliant technological breakthrough by Meridian Co. Ltd., South Korea

**Physicians:
Create a new revenue stream for your practice!**



- ✓ Advanced low level laser technology
- ✓ Most economical inch-loss laser lipo system in the market
- ✓ 1/4 the cost of other systems

- ✓ Non-invasive, painless
- ✓ Completely safe and effective
- ✓ Fast results
- ✓ Great patient satisfaction



Treatment Areas

- Stomach • Cellulite • Hips • Arms • Thighs • Post birth bulge. • Face / chin. • Love handles / back. • Bottom lift • Saddle bags •



Real results from Meridian's Lapex BCS Pro & Lapex Davan



MEDPRO MÓVIL LLC.

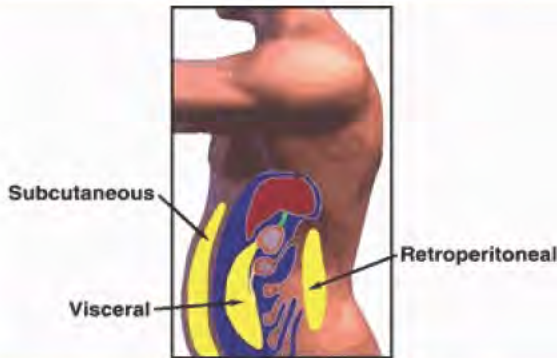
An authorized distributor of Meridian's Lapex BCS Pro 2000 & Lapex Davan in the United States

1-800-935-7841

What is laser lipo & the Lapex BCS Pro & Davan?

A Lipo Laser is a non-invasive laser device that successfully reduces fat by delivering safe low level laser energy to treat any area of the body. The Lapex BCS Pro 2000 & Lapex Davan are the industry's most successful and only lasers to use paddles that target key areas to penetrate deeper into the subcutaneous layers giving maximum treatment results.

Science behind Meridian's Lipo Laser Technology



The Science behind Laser Body Sculpting : The treatment liquefies the fat and the cell dumps it into the intercellular space. There are two types of fat cells – Subcutaneous and Visceral. Subcutaneous fat is located directly above the skeletal muscle and below the skin. Its superficial placement is what ensures proper depth penetration of the laser energy. Patients containing a high volume of visceral fat (fat below the skeletal muscle) are not ideal candidates for this procedure. However, they may still contain subcutaneous fat; therefore, you can treat the individual by just ensuring they adopt a healthy diet to address the visceral fat.

Process of Fat Reduction

The LAPEX BCS Pro & Lapex Davan are 100% non-invasive and use low level red laser energy to painlessly penetrate the skin stimulating targetted subcutaneous adipose (or fat) cells. When liquified and the cells begin releasing water, free fatty acids, and glycerol (Triglycerides), the adipose are released through the pores on the cell membrane thereby reducing the overall size of the area.

Mechanisms of Action



Adipocytes at rest.



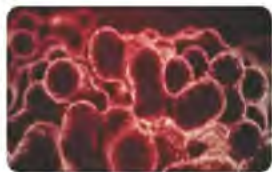
The LAPEX BCS Pro energy starts to irradiate the adipocytes.



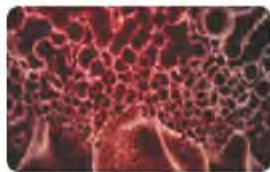
Irradiation causes photobiomodulatory effect and releases the contents by formation of transitory pores



Water, Glycerol and Free Fatty Acids are released from the adipocytes.



Continued release until complete deflation of adipocytes.



Continued release until complete deflation of adipocytes.



Continued release until complete deflation of adipocytes.



Continued release until complete deflation of adipocytes.

Various clinical studies have demonstrated that a low level Lipo Laser stimulates the fat cells to emulsify (liquefy) the fat within the cell. Then the liquefied fat moves from inside the cells through a temporary pore formed in the cell membrane to outside the cell where it is in the interstitial space until absorbed by the lymphatic system. This results in millions of fat cells becoming smaller so inches are reduced off the waist, hips, thighs and other treated areas of the body. Typically, a standard treatment releases 40-60 grams of fat per session. This cell-metabolism-based medical procedure is bio-friendly enabling body to eliminate fat naturally through post treatment exercise such as body vibration machines or treadmills.

Components

LAPEX BCS PRO 2000



Lapex BCS Pro System
4 paddles + 2 small paddles
for lymph nodes
Training Video
User Manual

LAPEX DAVAN



Lapex Davan System
8 paddles + 2 small paddles
for lymph nodes
Training Video
User Manual

*Lapex Davan is the upgraded
 version of Lapex BCS Pro 2000
 Twice as powerfull
 Delivers results in half the time.*

Manufacturer's Warranty : Meridian Co. Ltd., South Korea, provides a 24 months full warranty on Lapex BCS Pro 2000 & Lapex Davan. MedPro Movil LLC. administers Meridian's warranty program, technical support, and servicing of equipments in the United States. MedPro stocks parts & accessories and provides loaner machines free of charge during servicing or any downtime of your equipments. Additionally, MedPro provides two full days of free on-site training to your staff.

Caution : Body contouring is a medical procedure and must be performed under the supervision of a physician duly licensed to practice medicine in the United States! MedPro Movil LLC. sells these medical devices to Physicians only. There is no known side effects to laser-lipo treatment, however, prior to treatment, all patients should be given a physical and must be cleared for contraindications, such as: pregnancy, epilepsy, cancer, and pacemakers.



LAPEX BCS PRO & LAPEX DAVAN - Cash flow opportunity

Dear Physicians: Are you finding it difficult to keep up with the ever rising cost of patient care? Are the diminishing reimbursement policies by insurance companies affecting your bottom-line? Have you been thinking of finding ways to add more revenue to your practice? You are not alone. In today's ever changing landscape of healthcare, physicians across the nation face the dilemma: How to maintain the financial stability of the practice on a continuing basis in the future?

"Medical Aesthetics" and "Medical Weight Management" modalities may be the answer. These modalities truly present the best opportunities for any practice today. Obesity has risen to an epidemic proportion. Americans are spending over \$40 billion a year on weight loss treatment, with an annual cost of \$100 billion to US economy and the Society as per CDC. As a licensed Physician you have the perennial right to treat overweight or obese patients and those who simply wish to trim and look fit. We bring cost effective, high-end, and easy-to-operate technologies to practices enabling addition of medical aesthetics and other high-yielding modalities that may be instrumental in improving overall patient care and practice bottom-line.

MedPro Movil LLC. is proud to introduce one of today's most intuitive and cost-effective full-body contouring systems to your office: **Meridian's Lapex BCS Pro 2000 & Lapex Davan**. Add a great new revenue stream to your practice while enhancing the quality of life of your patients! This medical aesthetic program should be supervised by you while procedures can be performed by a licensed Esthetician duly trained in laser treatment. You can offer the new service to your existing patients as well as promote/advertise on the Internet and in the local media along with other services offered by your practice to add new cliental.

GREAT ROI: With only three patients per day, recover the entire investment in less than three months!

As this is an MD-supervised medical weight reduction program you should set your own fee schedule for each treatment. We suggest a fee of \$200 per session. For the purpose of revenue projection for your office, we will use a conservative fee of \$150.00 per session. While most patients would desire a 9-session package, a good number of patients would opt for 14 sessions or more. You can offer a discounted fee schedule for such patients, such as: \$1299 for a 9-session or \$1999 for a 14-session package. An average practice should begin experiencing 8-10 patients' volume per day per machine in a few months of operation. Projection of potential revenue presented below are just for reference purposes. MedPro Movil LLC. & Meridian Co. Ltd. does not assume any responsibility or provide any guarantee whatsoever as to your patient volume or actual revenue.

Conservative estimate of potential revenue: Based only on 3 patients per day @\$150 per session, your practice revenue in the first few months should like this:

Number of Machines	Procedures per week	Weekly Revenue	Monthly Revenue	Annual Revenue
1	15	\$2,250	\$9,750	\$117,000

When machines are utilized to 80% capacity or 8 patients per day with 40 minutes each session, the potential revenue for the practice tend to build up to a much higher level, as shown below:

Number of Machine	Number of patients per day	Average charge per session	Daily Income	Weekly Income	Monthly Income	1st Year Income	5 year Income
1	8	\$150	\$1200	\$6,000	\$26,000	\$312,000	\$1,560,000
2	16	\$150	\$2400	\$12,000	\$52,000	\$624,000	\$3,120,000

*Achieving this level of service means you recover your investment in less than one month!



IRS SECTION 179 TAX DEDUCTION - 2014

Take advantage of IRS Section 179 Tax Deduction. Equipments bought or leased (non-tax/capital lease) and put into operation in 2014 qualify for a \$25,000 outright tax deduction. See the example below:

Cost of Equipment	Section 179 Deduction	Cash Savings assuming 35% Marginal Tax Bracket	Lowered Cost of Equipment after Tax Savings
\$25,000	\$25,000	\$8,750	\$16,250

The saving lowers the cost of owning the equipments, thereby resulting in less cost-per-test and increased ROI (Return on Investment)

The Finer Print : Tax Code Section 179 & Election to Expense

Election to expense, explained and filed on Form 4562, affects only the specific year that the equipment was put into service. You could also file an amended return within the legal amount of time. The cost of your entire equipment purchase to be depreciated for any year should not exceed your total taxable income. The definition of Section 179 equipment is specifically defined as property acquired by a purchase and intended to be utilized in your business. You may want to reference Publication 946 to read more about eligibility requirements. The Section 179 deduction is intended for taxpayers, not including trusts, estates and some specific non-corporate lessors who elect to treat the cost of qualifying property as an expense rather than a capital expenditure. Under these rules, your equipment costs may be deducted from your taxable income up to the approved amount for any specific year. The equipment must be installed by December 31, 2014. Any non-tax lease qualifies for this accelerated depreciation rule on equipment during the first year of use. Please remember that not every State follows this federal law. Please ask your tax adviser for additional information, or visit www.irs.gov for more details on this subject.

Information stated above is informational only and may change.

PURCHASE / LEASING OPTIONS

MedPro, in partnership with carefully selected and reliable leasing companies, offers most cost-effective and convenient leasing options to physicians. Please identify to our representative which of the following purchase / leasing options is most preferred by you:

Cash Purchase:

Check Wire-transfer Credit Cards PayPal

Capital Lease:

24 Months 36 Months 48 Months 60 Months

MedPro Movil LLC Financing:

In select cases MedPro Movil will finance your purchase. Pay 50% Down, and the remaining balance in 6 equal monthly installments.



Below is a sample print ad that you can amend to reflect your practice for advertising purposes

Your Company Logo

YOUR COMPANY NAME

1-000-000-0000

Give Us 40 Minutes, We'll Take Away Inches!

**MD Supervised, Full Body Contouring
No Suction, No Surgery, No Pain, FDA Approved**

Contour The Body You've Always Wanted...Just in Time for Summer!

Your Treatment is Totally Non-Invasive and Painless. The LAPEX PRO & DAVAN means no surgery and no suction. It uses 21st-century technology to simply and easily liquefy fat cells and have your body eliminate them naturally.

Treatment Areas

- Stomach •
- Cellulite •
- Hips •
- Arms •
- Thighs •
- Post birth bulge •
- Face / chin •
- Love handles / back •
- Bottom lift •
- Saddle bags •



HOW IT WORKS:

The LAPEX BCS Pro & Lapex Davan are 100% non-invasive and use low level red laser energy to painlessly penetrate the skin stimulating targeted subcutaneous adipose (or fat) cells. When liquefied and the cells begin releasing water, free fatty acids, and glycerol (Triglycerides), the adipose are released through the pores on the cell membrane thereby reducing the overall size of the area. You lose inches wherever you desire, even the whole body, while relaxing and enjoying music! This cell-metabolism-based medical procedure is bio-friendly, safe with no side effects, and FDA approved.

"LAPEX BCS Pro & LAPEX Davan are the one and only original, LLL (LowLevelLaser) assisted, non-invasive, highly effective, FDA cleared and internationally patented Body Contouring medical device"
*Lapex is registered trademark of Meridian Co. Ltd., South Korea

**Results in just 3 weeks when combined with proper diet and exercise!
We're Your Neighbors...and we offer Complete Medical Services.**

Pediatrics - Internal Medicine - Family Practice - Obs/Gynecology - Cardiology - Pulmonology - GI Urology - Podiatry - Physical Therapy - Pain Management - Neurology - No-fault - Workmen Comp.

Locations : Queens - Brooklyn - Manhattan - Bronx

Why Wait? Loose Inches Now! Call: 1-000-000-0000 for Immediate Appointment



SCIENTIFIC VALIDATION OF LAPEX BCS PRO & LAPEX DAVAN SYSTEMS & ABSTRACTS FROM CLINICAL STUDIES

Below are conclusions from Scientific Validation Studies carried out by medical institutions around the world, validating accuracy and effectiveness of Meridian's Lapex BCS Pro 2000 & Lapex Davan Systems. For copies of all such scientific studies, and other Clinical Abstracts and Peer Review Studies, please contact our representative or fax your request to 1-800-732-1219:

Fat Liquefaction: Effect of Low-Level Laser Energy on Adipose Tissue

Rodrigo Neira, M.D., José Arroyave, B.S.C.E., T.E.M., S.E.M., Hugo Ramirez, M.V.,

Clara Lucía Ortiz, M.D., Efrain Solarte, Dr. rer. nat., Federico Sequeda, Ph.D., and

Maria Isabel Gutierrez, M.D., M.Sc., Ph.D.

Cali and Palmira, Colombia

Conclusions : The low-level laser-assisted lipoplasty consists of the tumescent liposuction technique with the external application of a cold laser (635 nm and 10mW intensity for a 6-minute period). This technique produces a transitory pore in the adipocyte membrane, preserving the interstice, particularly the capillaries. When adipose tissue is exposed to the laser beam for 4 minutes, 80 percent of the adipocytes' membranes are disrupted; this increased to almost 99 percent with 6 minutes of laser exposure, as demonstrated by both scanning electron and transmission electron microscopy.

The laser facilitates the releasing of fat and contributes to the disruption of the fat panicles, allowing the fat to go from inside to outside the cell and placing it in the interstitial space. With easier fat extraction, surgical trauma, ecchymoses, and hematomas are reduced to facilitate the patient's recovery.

The transitory pore formation induced by the laser occurs exclusively at the level of the adipocyte membrane. When tumescent solution was used as a co-adjuvant, almost 99 percent of the fat was released into the interstice, whereas the capillaries and the remaining interstice were preserved. The result of this development is a safer, more effective procedure with elimination of the need for pretunneling.

Rodrigo Neira, M.D.

Avenida 4-Oeste # 5-274, Apto 301 B Edificio Bosque Valladares, Cali, Colombia

neira-rod@emcali.net.com

Clinical Results of Application of Low Level Laser Therapy in Body Contouring and Spot Fat Reduction

Daniel J. Bourassa, DC

Conclusions: Low level laser therapy (LLLT) has found increasing clinical acceptance in cosmetic body contouring and spot fat reduction. This study examined whether LLLT using 630-680 nm, 150 mW shower arrays and single 40 mW diode laser radiation sources produced significant clinical effect for this purpose. A review of clinical results was made of 311 patient records collected over a 26 month period that underwent LLLT for cosmetic purposes to the abdominal/torso area. Clinical results showing measured abdominal reduction are presented. Overall, 130 patients in 6 session and 12 session groups achieved average sustained losses of 6.55 cm and 11.04 cm corresponding to an average girth reduction of 0.48 -0.55 cm per session. With weight loss of a minimum of 0.68 kg per week, results averaged 9.0 cm for the 6 session group and 16.1 cm for the 12 session group corresponding to an average girth reduction 0.67-0.75 cm per session. Initial session losses of 253 patients averaged 2.79 cm or 1.4 cm in girth reduction. 75.2% were able to sustain at least 4 cm or more loss in 6 or more sessions. Effects of variations in protocol to include number treatments, session time, total laser time per treatment, weight loss effects, use of topical fat reduction creams as well as potential topics for further study are discussed. Based on the review of patient results, it would appear that LLLT can be an effective therapy for body contouring and spot fat reduction.

Efficacy of Low Level Laser Therapy for Body Contouring and Spot Fat Reduction

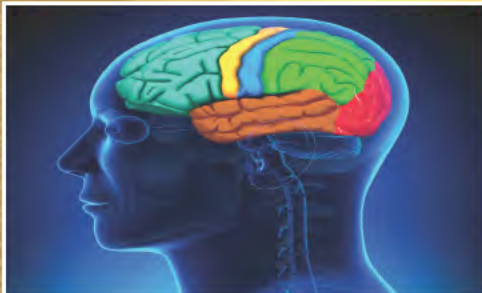
Caruso-Davis MK1, Guillot TS, Podichetty VK, Mashtalir N, Dhurandhar NV, Dubuisson O, Yu Y, Greenway FL.

Conclusions : LLLT achieved safe and significant girth loss sustained over repeated treatments and cumulative over 4 weeks of eight treatments. The girth loss from the waist gave clinically and statistically significant cosmetic improvement.

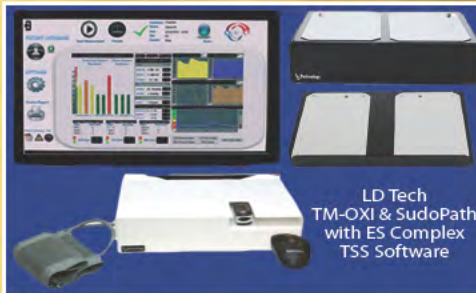


MEDPRO MÓVIL LLC.

**On - site
Medical Diagnostic
Services**



**Cutting-edge
Medical Equipments
& Technologies
(Reseller)**



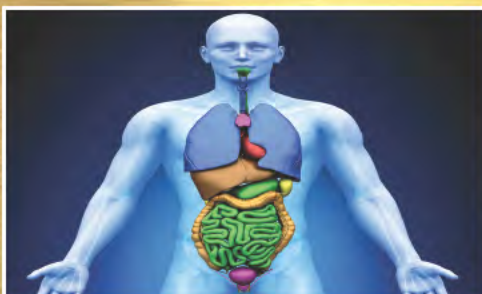
**Revenue
Maximization
Consulting**



Revenue Maximization Projects



Obesity Clinics
(Operations / Management)



Meridian Laser Lipo Full Body Contouring System

