



## About Dr. Lenny Izzo

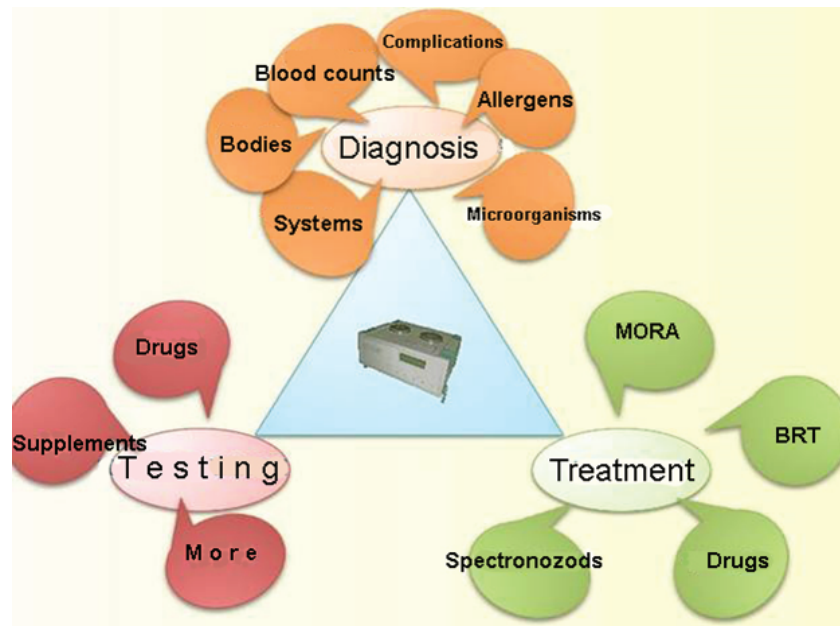
A New Breed of Healer

*My mission is to inspire, educate and empower as well as to engage each person in the conscious journey of healing and regeneration. I utilize the most advanced tools and natural techniques available in order to bring about a restored state of health, healing, and prosperous longevity.*

### A New Breed of Healing

With 21st Century Health Care and the Field of Functional Medicine has emerged a new breed of doctor and counselor. We allow the patient more control over their own well-being by giving them the tools to affect their own destiny. In short, you are given an opportunity to embark on a healing journey and participate in your own care, rather than to merely receive treatment of symptoms. You have an opportunity to take control of your own health while still utilizing the best that science has to offer. In the 21st century model of healing, integrated treatment and health coaching is the way to achieve optimal health.

Functional Medicine addresses the underlying causes of disease, using a systems-oriented approach and engaging both patient and practitioner in a therapeutic partnership.



Dr. Izzo received his doctorate from New York Chiropractic College and his Bachelor's Degree in Sociology from C.W. Post College. Dr. Izzo has been practicing since 1980, and has a broad background in integrated health care with a special interest in clinical nutrition. He teaches and lectures on the subject of nutritional psychology, understanding the "issues in the tissues" and has made numerous appearances on radio and television.

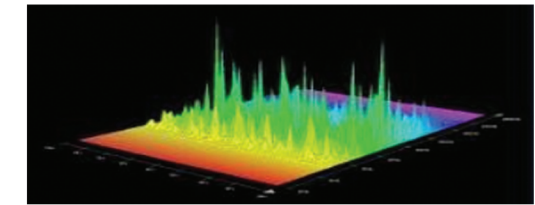
His clinical experience of integrating conventional medicine with advanced clinical nutrition, spiritual practices and other holistic modalities make for a more effective and comprehensive approach in treating the "whole person."



# SENSITIV IMAGO

## Bioresonance Technology

- ✓ Analyze the homeostasis of organs
- ✓ Detect biological activity of micro flora, viuses, bacteria, and parasites
- ✓ Test individual remedies, medication, and food for each patient
- ✓ Treat with bioresonance, use individually prepared spectronosodes for each patient
- ✓ Detect and treat the food intolerances, chemical sensitivities, electro-magnetic sensitivities
- ✓ Treat infection of virus, bacteria and parasites effectively
- ✓ Treat all kinds of addiction.



Dr. Lenny Izzo is a Consultant of MedPro Movil LLC and a master practitioner of Bioresonance methodology. See his bio on the back cover.



# MEDPRO MÓVIL LLC.

A sub-distributor of Computel, Inc.  
Computel, Inc. is the national distributor  
of Sensitiv Imago in USA.

1-800-935-7841

# The Sensitiv Imago Technology

## Individual-Monitoring-Anatomical-Graphic-Objects

### Where Science and Healing Meet

#### A new Breed of Doctor requires a new Type of Technology

Bioresonance therapy is an alternative method to assess variety of health problems of a patient. It's a non-invasive method, which means the patient does not have to worry about any risks associated with invasive examination or other techniques which are often used in our conventional model. S-Imago has been designed for a wide range of purposes, from exact and accurate assessment of a patient's total health condition, to determining the key critical factors that are breaking down a patient's health, and even determining the risk factors leading to long term crisis. It can easily detect viruses, bacterial, fungal and even parasitic infections. It can assess levels of tissue, organ and system toxicity and disclose the sources causing this toxicity. And at the same time it can produce unique therapeutic effects on body and aids in a faster more natural recovery.

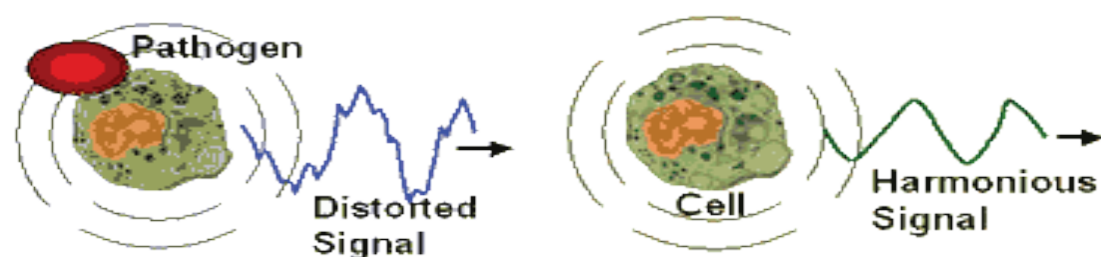
### Bioresonance Explained

Bio-energy resonance or bio-resonance is the field of Energetic Medicine that detects and works with electromagnetic frequency information generated by the body. Bio refers to a living organism and resonance means 'to vibrate in harmony with'.

Our body cells generate tiny electrical impulses that interact or communicate with neighbouring cells. Cells continuously emit and respond to these signals. These signals are in the form of oscillations or vibrations and the oscillation pattern had been found to differ between a healthy person and a sick person. Oscillations from a cell burdened with foreign substances such as bacteria, toxins, etc., also have a different structure to that of a healthy cell. The diagrams below are simply explaining the theory behind bio-resonance.

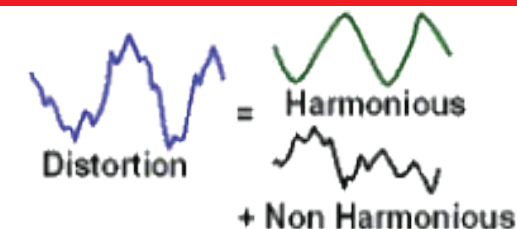
### Sampling micro-magnetic oscillations:

All cells in the body emit minute electrical signals and these signals are used as a means of communication between cells. If a cell is in a good health its signal will be harmonious and resonate in a free manner with other cells the body. If a pathogen (toxin, virus, parasites etc) attacks a cell then the signal coming from the cell becomes distorted. The signal profiles are measured via electrodes attached to the patient's body.



### Processing the tapped body information:

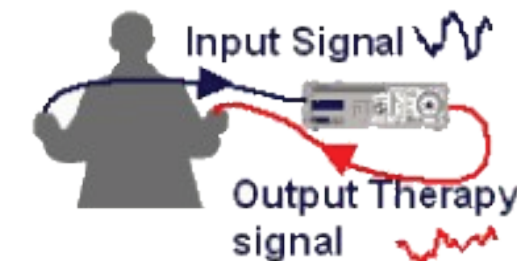
Distorted signals coming from damaged cells consist of harmonious and non-harmonious oscillations. So-called molecular-absorption-circuit within the bio-resonance machine filters out the distorted part of the signal.



### Bio-resonance therapy:

The non-harmonious oscillations are inverted and returned back to the body as therapeutically effective information. The inverted oscillations cancel out the distorted signals and stimulate the cells to oscillate in a healthy mode.

Bio-resonance simulates the body self-healing, produces NO side effects and represents the next stage in the evolution of health care.



For each organ of the human body there is defined frequency band, recorded in the table. For example, for the heart it is 700-800 Hz, which increases in case of stenocardia up to the level of 1500 Hz.

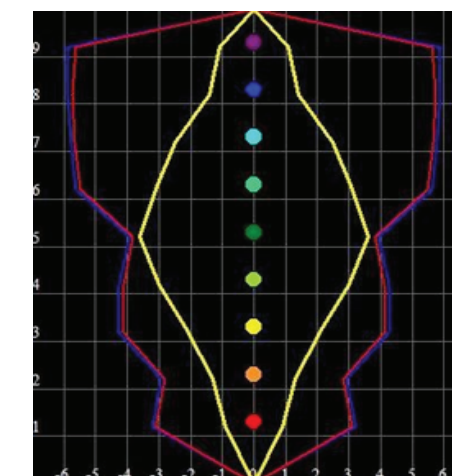
For the kidneys is 600-700 Hz with an increase in case of inflammation up to 900 Hz, for the liver is 300 - 400 Hz with an increase in case of inflammation up to 600 Hz.

The graph displays the reference processes written into the software as the basic data.

Testing with bioresonance and comparison of patient characteristics of the wave with the reference process has become crucial for the development of such modern diagnostic method of energy-information diagnostics as Nonlinear Analysis (NLS). This is one of the latest advances in medicine, which allows capturing and reflecting in the form of maps and tables the slightest changes in biological structures of living organisms. Frequency characteristics of healthy organs are systematized and divided into 13 filters (groups).

Physiological ("harmonic") fluctuations are those one that come from healthy organs. Each organ has a specific, peculiar for it only spectrum of electromagnetic oscillations, which can be displayed as a graph.

### Adenohypophysis Hypophysis



### Arthritis Arthrosis

